

Maur Hill – Mount Academy Parent Club

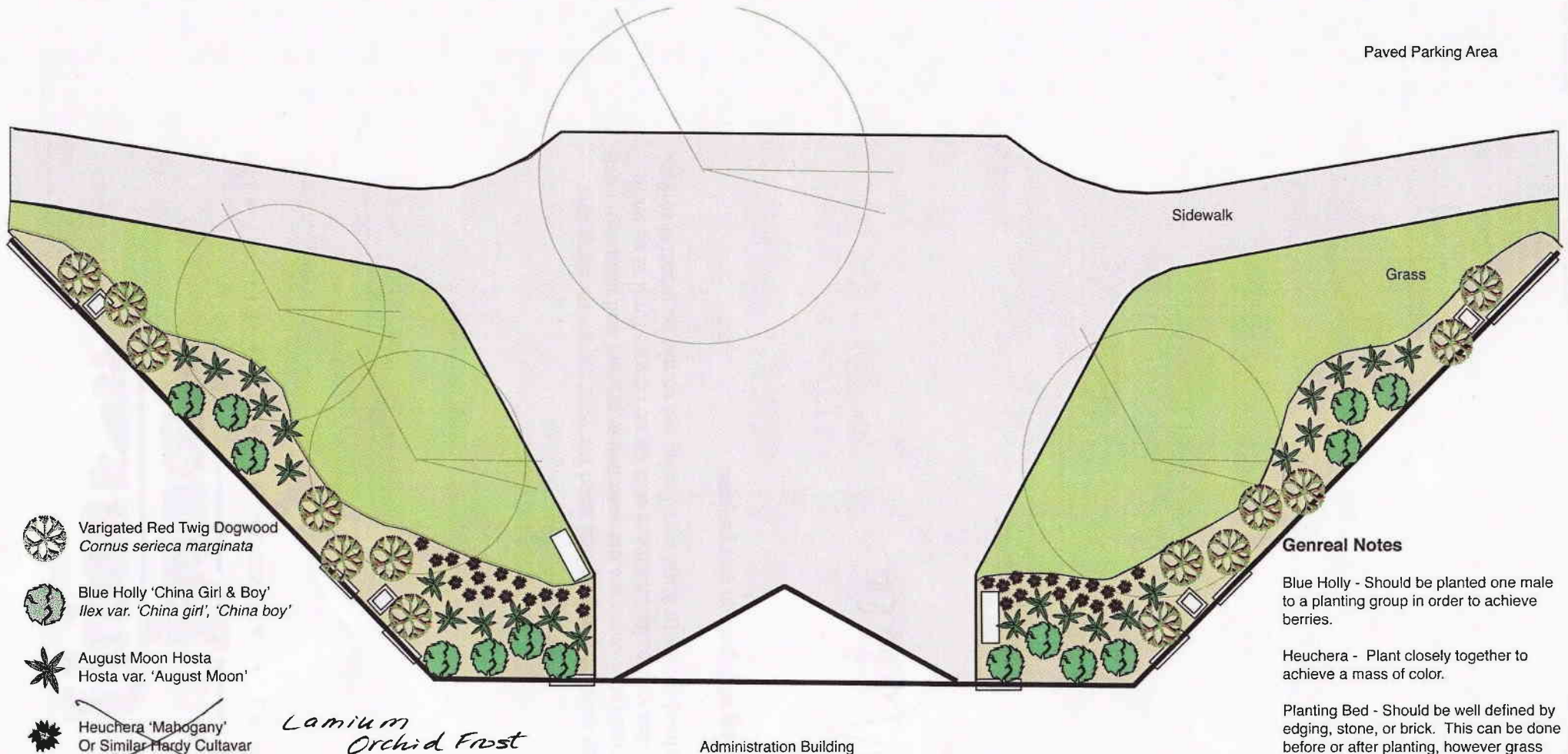
## Summary Report of Landscaping Project

Submitted by: Laura Moccia  
November 11, 2009

1. In May 2009 following the Parent Club flower sale, Pat Kuckelman suggested that some of the proceeds be used to landscape the area in front of the Administration Building, both east and west of the main door.
2. At the officer's meeting at the end of May, I discussed the idea with incoming officers and it was decided to pursue this. It was estimated that the plants would cost \$1000 - \$1500. Volunteers would do the planting, so labor costs would not be an expense.
3. The next step was to contact Sharon Pruett for approval, before any further work was done with the project.
4. Over the summer, I worked on getting a plant plan. I contacted Kathy Handke from K&L Garden Center and also worked with my nephew Joe Lenz, who is majoring in Landscape Architecture at Arizona State University. Both submitted drawings with suggested plants and placement. Both plans recommended all new shrubs/plants. The existing ones were not thriving due to inadequate sun.
5. In August a soil test report from K-State was also obtained through the Atchison County Extension Office.
6. In September the decision was made to follow the plant suggestions and layout submitted by Joe Lenz. (attached)
7. I began working on getting pricing and bids on October 9. I sent a listing of items that were needed for the project and asked if any discounts would be possible since this was a large project for a school. The businesses that were contacted included: K&L Garden Center, Skinner Garden Store in Topeka, and Grass Pad on Barry Road in north KC. Grass Pad offered the best pricing. *\$1375 - including \$100 for delivery*
8. Next I contacted Ron Urban to have him meet me at the school to discuss if additional soil would be needed. He offered to donate a truckload of dirt. He reviewed the plant plan and also offered to obtain the plants through Grass Pad in Bonner Springs, which is his supplier for Urban Lawn Care. He thought that he could save us a little extra money as well.

9. About mid October, ten existing bushes were transplanted (by Paul and I) to the east side of the building. Six were placed behind the St. Benedict's statue and four were put in along the building to fill in a couple of bare spots. They should do better over there since there is more sun.
10. The dirt was brought to the planting area during the last week of October. The shrubs and plants were put in during the first week of November. Volunteers that helped dig and plant were: Paul Moccia, Jim Haug, Janice Smith, Pat Kuckelman, Joseph Kuckelman, and Katie Corrigan-Toews.
11. Soaker hoses were installed to make watering easier during the year. I will be responsible for watering during the next 12 months.
12. Thank you notes were sent as follow up with the three businesses that submitted bids.
13. During the first part of December we plan to put down some new grass seed in front of the newly landscaped area. In spring, additional Lamium (orchid frost) plants will go in. The plants will be given Mir-Acid, as per recommendations from the soil report.
14. Going forward, I recommend that the school take over keeping the area adequately mulched, leaves raked, bushes pruned, etc. I'm sure Urban Lawn Care would help out with that if needed.
15. I suggest that Parent Club send a "Thank you" to Ron and recognize him for his generosity and interest in helping me. I did submit a monetary donation to Joe Lenz for all his efforts.

Total Cost: See attached invoice from Urban Lawn Care.



Paved Parking Area

Sidewalk

Grass

-  Varigated Red Twig Dogwood  
*Cornus sericea marginata*
-  Blue Holly 'China Girl & Boy'  
*Ilex var. 'China girl', 'China boy'*
-  August Moon Hosta  
*Hosta var. 'August Moon'*
-  Heuchera 'Mahogany'  
Or Similar Hardy Cultivar
-  Existing Trees  
Sp. Unverified

*Lamium Orchid Frost*

Administration Building

**General Notes**

- Blue Holly - Should be planted one male to a planting group in order to achieve berries.
- Heuchera - Plant closely together to achieve a mass of color.
- Planting Bed - Should be well defined by edging, stone, or brick. This can be done before or after planting, however grass should be removed from planting bed.
- Optional Planting - Daffodils may be planted under and around hostas. Daffodils will bloom early spring followed by hostas which will cover their spent foliage.

# MAUR HILL - MOUNT ACADEMY

Administration Building  
Planting Plan - North Side  
Designer: Joseph Lenz

